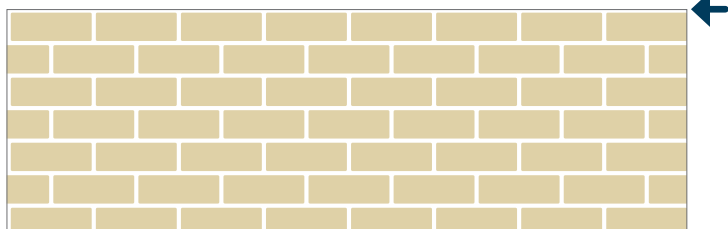


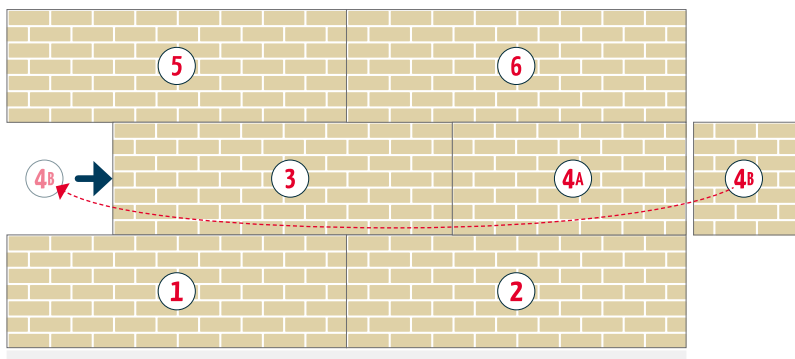
# DURA STANDARD 214 PANELS



The top panel edge has a 10mm mortar line gap.



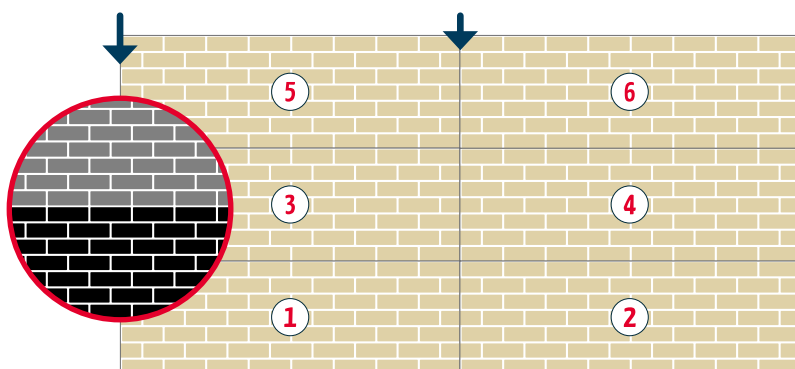
Dura Standard 214 looks best installed with alternate rows offset.



What happens if I use a stacked layout?

A stacked layout will disrupt the brick pattern.

Panel edges may be more visible.



## HOW TO PREPARE

Follow these simple instructions to prepare your **Dura Standard 214** panels for installation.

### BEFORE YOU START

Make sure all *Dura Standard 214* panels are the right way up. Panels need to be installed with the 10mm mortar line **at the top**.

#### Work out the brick pattern

Install *Dura Standard 214* using an **offset layout** to get an authentic brick pattern.

Offset alternate panel rows 2½ bricks. At the end of the row cut off the panel overhang. Use the off-cut to fill the offset gap.

### PREPARATION

To prepare your panels before installing:

- 1 Ensure panel edges are free of excess brick.
- 2 Cut part panels required using a masonry disc in a circular saw or angle grinder.
- 3 Mitre corners at 45 degrees.

### ADDITIONAL OUTDOOR PREPARATION

DuraBric panels can be installed on an outside wall to create an authentic brick finish. But, it is important the DuraBric panels **do not get wet**.

Panels **MUST** be completely sealed with an acrylic waterproof/membrane paint before installing.

The paint must be applied to the whole panel as per the manufacturer's guidelines.

We recommend [Crommelin Fix & Finish](#) (available at Bunnings) which comes in 8 pre-mixed colours.

Alternatively, white can be tinted to the required colour or a different finish applied over the painted panels after installation.

To prepare for outdoor installation:

- 1 Make sure panels and substrate are dry.
- 2 Use non-corrosive stainless steel or galvanised screws.
- 3 Seal the panels completely – front, back and sides – with an acrylic waterproof/membrane paint (like *Crommelin Fix & Finish*) to protect from getting wet after installation.



1300 665 341



[durabric.com.au](http://durabric.com.au)



[info@durabric.com.au](mailto:info@durabric.com.au)

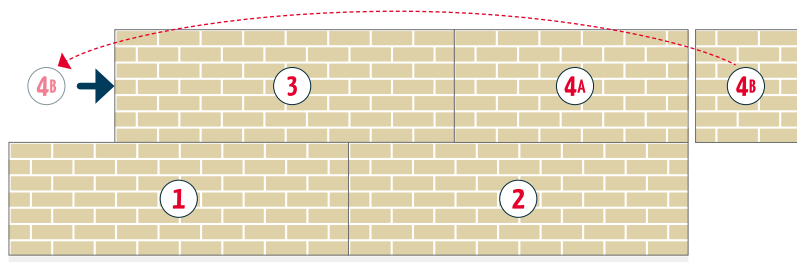


**Come and visit our showroom** 1/79 Lara Way, Campbellfield, VIC 3061

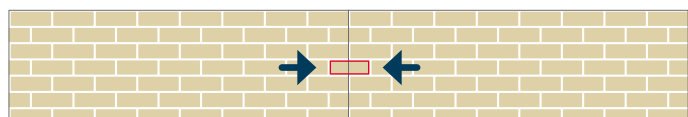
# DURA STANDARD 214 PANELS



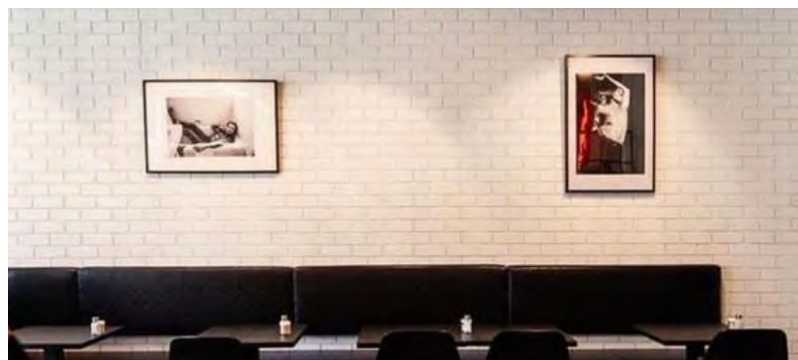
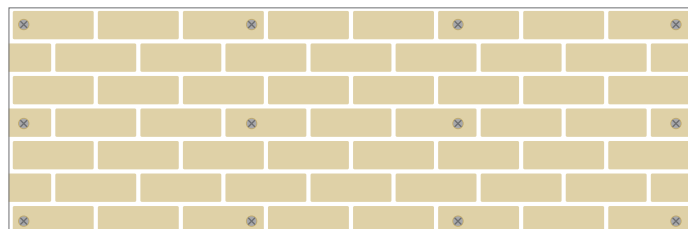
Install the bottom panels first and work up towards the ceiling, offsetting alternate rows.



Panels should be butt-joined horizontally. Half bricks at ends of each panel will align to create full bricks.



Sink 10-12 screws into the panel brickface, not the mortar lines.



## HOW TO INSTALL

After preparing your **Dura Standard 214** panels (see over) follow these easy installation instructions.

### INSTALLATION

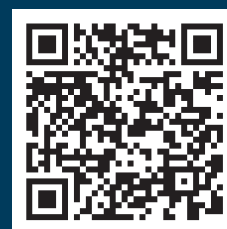
If installing DuraBric panels outdoors make sure you have completed the **ADDITIONAL OUTDOOR PREPARATION** (see over for details).

- 1 Install panels over a continuous substrate such as plaster, 6-8mm bracing ply, Gyproc or Blueboard.
- 2 Start by installing the bottom row first and work up to the top.
- 3 Panels need to be butt-joined. Half bricks on each panel will align to create one full brick.
- 4 To fix panels in place screw through the brickface **not** through the mortar lines – 10-12 screws per panel is recommended.
- 5 Sink screws approx. 2mm into the brickface
- 6 Conceal all screw holes and corner gaps with filler provided.
- 7 Filler supplied is ready to use – **do not add water**.
- 8 To remove excess filler, sand with an off-cut piece of DuraBric, brickface-to-brickface.

### HOW TO FINISH

All DuraBric panels are supplied unfinished.

For information and ideas on how to finish DuraBric panels scan the QR code.



Need some inspiration? Visit the [DuraBric Gallery](#).



ECONOMICAL



FAST & EASY INSTALL



TACTILE



G1 FIRE SAFETY RATING



DURABLE



BLANK CANVAS



LIGHTWEIGHT



NON-TOXIC



AUSTRALIAN MADE